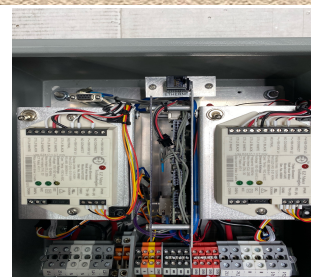




HYDRA-RXS2 Plug-in Vehicle Control System

Technical Specifications

EV Charging Station	HYDRA-RXS2
EVSE Circuits	2
Circuit Voltage	110-240 VAC
Circuit Current (each)	> 40 A
Control Circuit	110 VAC
Control Circuit Current	1 A (max)
Enclosure	Hoffman Concept Type 4
Enclosure Material	14 gauge steel
Enclosure Dimensions	16" x 20" x 8"
Panel Dimensions	18.20" x 14.20"
Mounting Dimensions	14.50" x 18.50"



Product Features

BASIC FEATURES

- **HYDRA-RXS-2 Controller of Two** non-network, level-two chargers >40 A chargers
- **Ability** to utilize all of Liberty's back-end technology (included below)
- **Cost efficient solution** for access control to meet two vehicle charging configurations

BACK-END TECHNOLOGY FEATURES

- **Access Control** of chargers through Mobile App, website, back-end, keypad, HID, and/or FOB
- **Optional Management** of accounting, access control, and payment
- **Temporary PIN codes** valid through predetermined time frame
- **Payment processing**, pre-payment, monthly billing, point of sale, and payment alerts
- **Remote Monitoring**, Control, and Diagnostics
- **Alerts** (Email/SMS) - Start/Stop charger, availability of Chargers, faults, payment reminders
- **Reporting** on usage (employee, site, EVSE, and other usage reports)
- **Local Load Management** (load sharing) – ability to limit maximum current output
- **Data Collection** to receive Low Carbon Fuel Credits where available
- **Power Curtailment** - turn off/manage power through back-end

